

EXTRA HEAVY THIMBLE

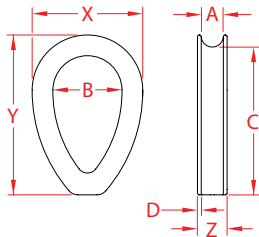
304 STAINLESS STEEL



Import



Precision
Cast



ITEM	A (size)	B	C	D	X (height)	Y (length)	Z (width)	WT (lb)	PACKAGING TYPE	EACH (qty)	INNER (qty)	CARTON (qty)	UPC
S0123-XH06	1/4"	0.67"	1.51"	0.06"	1.23"	1.69"	0.43"	0.06	POLYBAG	1	10	200	791506031840
S0123-XH08	5/16"	0.97"	2.09"	0.08"	1.59"	2.29"	0.50"	0.12	POLYBAG	1	10	200	791506031857
S0123-XH10	3/8"	1.11"	2.47"	0.06"	1.81"	2.65"	0.55"	0.20	POLYBAG	1	10	100	791506031864
S0123-XH13	1/2"	1.46"	3.13"	0.08"	2.34"	3.34"	0.64"	0.31	POLYBAG	1	1	50	791506031871
S0123-XH16	5/8"	1.86"	4.07"	0.15"	2.95"	4.33"	0.90"	0.79	POLYBAG	1	1	25	791506031888
S0123-XH20	3/4"	2.39"	4.54"	0.10"	3.52"	4.88"	0.93"	0.81	POLYBAG	1	1	20	791506031901
S0123-XH22	7/8"	2.52"	4.65"	0.10"	3.84"	5.04"	1.06"	1.05	POLYBAG	1	1	15	791506031925
S0123-XH25	1"	2.95"	5.19"	0.13"	4.55"	5.72"	1.25"	1.46	POLYBAG	1	1	10	791506031932

NOTE:

PRECISION CAST EXTRA HEAVY DUTY THIMBLE, NOT FORMED FROM FLAT STEEL. EXCEPTIONAL RESISTANCE TO WEAR AND CRUSHING. ALL DIMENSIONS ARE NOMINAL (+/- 3%) AND ARE SUBJECT TO CHANGE WITHOUT NOTICE.